





Make a splash



FAR LEFT

The shower stall is roomy enough to accommodate two people. The door to the left of the shower opens to the sink and toilet.

LEFT

Homespun accessories carry out the serenity of the outdoors, as seen through a strategically placed window above the tub.

For a change

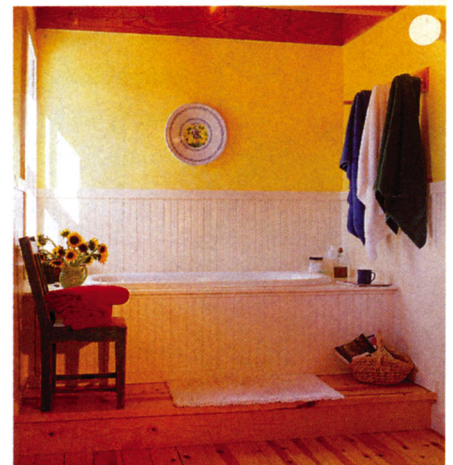
Playing off the rustic ambience of his clients' mountain home, architect and interior designer Max Jacobson designed a bath with all-natural appeal, as well as a built-in ability to change appearance with little effort or outlay.

Jacobson accomplished both goals with his choice of surface materials, specifying a go-with-anything knotty pine floor and trim and simple white tiles for the generous shower stall. In addition, Jacobson covered the lower half of the walls with white-painted beaded-board paneling; he painted the upper half sunshine yellow. "It seemed like the perfect color," he says. "It reminds me of the best things about morning time. It's a great color to get the day going, even when it's blizzarding outside." Both sections can be repainted easily in a weekend, should the homeowners opt for a different color scheme.

The only additional color in the space comes from well-chosen accessories—towels hung from Shaker-style pegboards, a pair of chairs with distressed finishes, and baskets and pottery with an eye-pleasing mix of textures.

BUYING GUIDE ON PAGE 98

Photographer: Robert Brown & Associates. Architect and interior designer: Max Jacobson. Field editor: Heather Lobdell



ABOVE

Architect Max Jacobson resurfaced an old tub and placed it in a beaded-board paneling surround. A pine step "puts the tub on a stage," he says. "I really like the way it makes the tub feel a little theatrical."